



e-Navigation
Underway2020
A s i a - P a c i f i c



The Maritime Connectivity Platform live!

A global platform for digitalisations
(aka e-navigation)

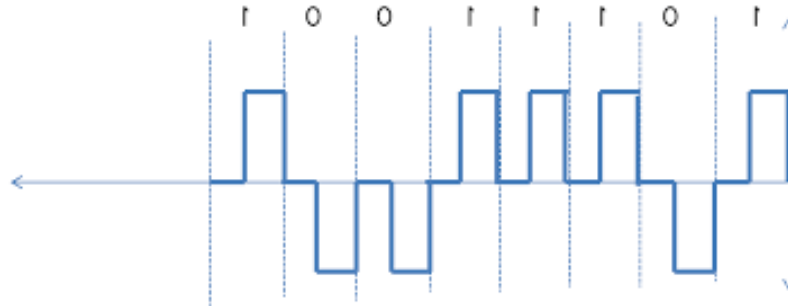
Thomas Christensen

Secretary General of

The Maritime Connectivity Platform Consortium



e-Navigation
Underway2020
A s i a - P a c i f i c



Service provider

Service consumer

Service oriented architecture (SoA)



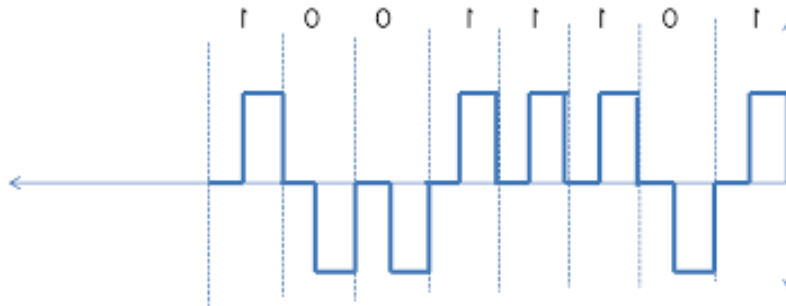
e-Navigation Underway2020 A s i a - P a c i f i c



?



?





e-Navigation Underway2020 A s i a - P a c i f i c



Trusted and verifiable identities



Service discoverability

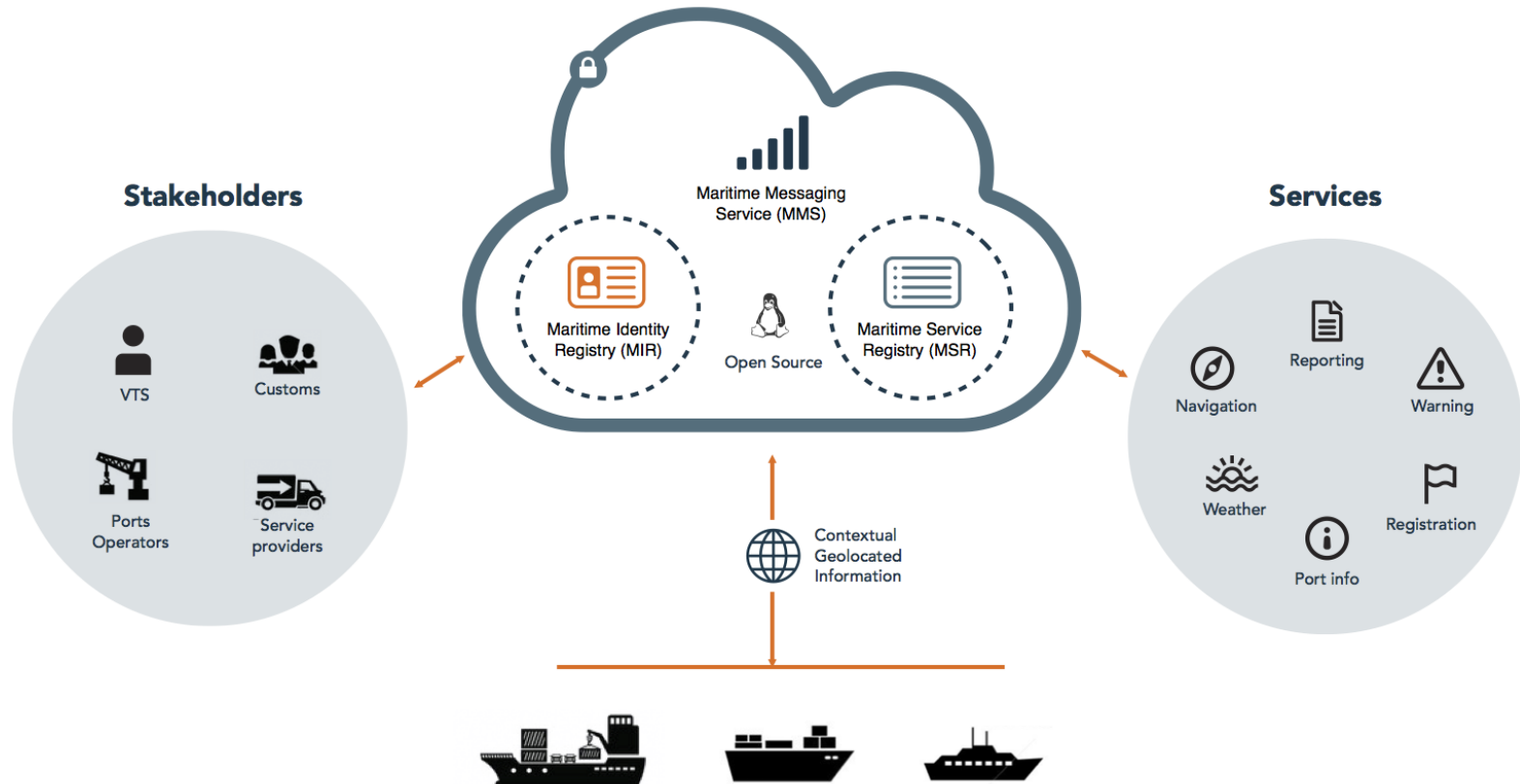


Secure and reliable information exchange





THE MARITIME CONNECTIVITY PLATFORM





e-Navigation Underway2020 A s i a - P a c i f i c



Trusted and verifiable identities

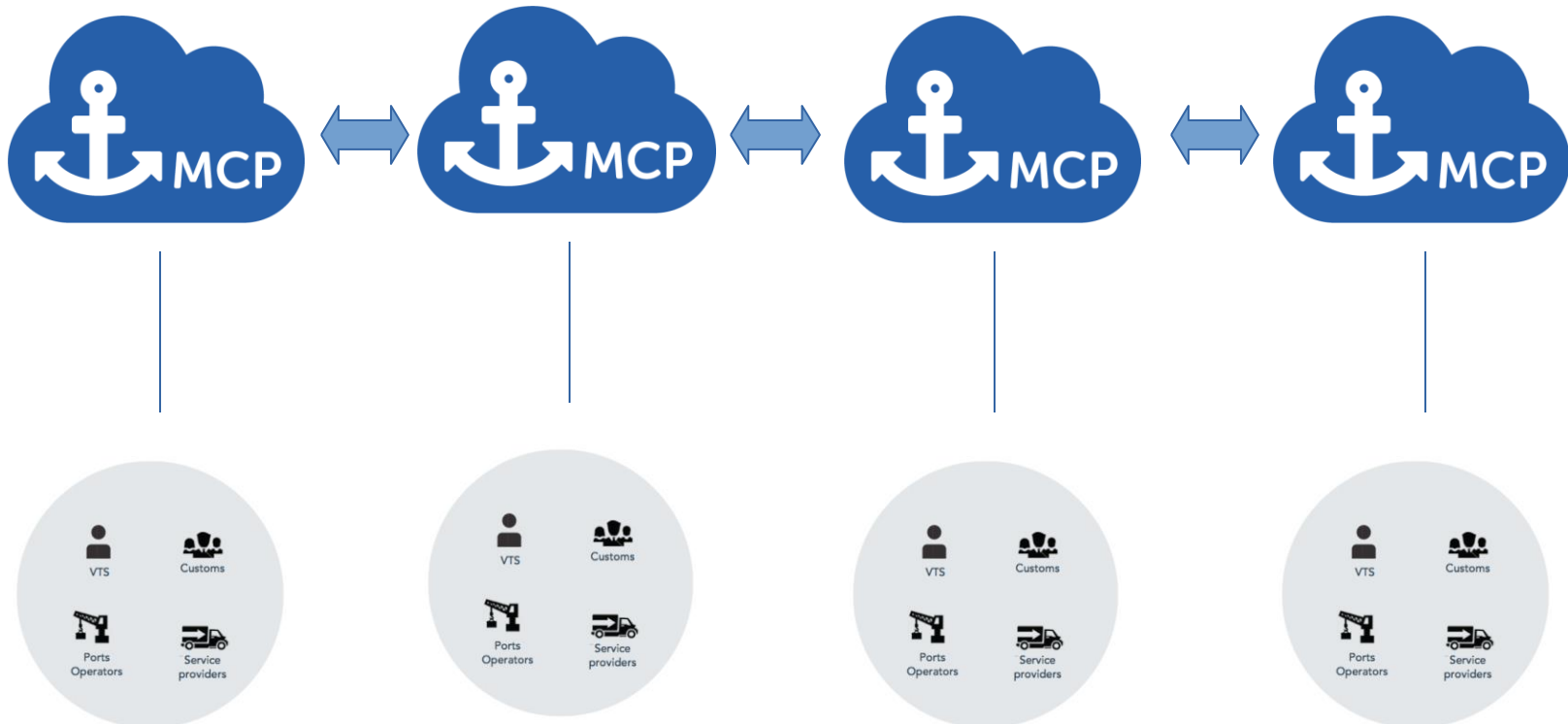
Service discoverability

Secure and reliable
information exchange



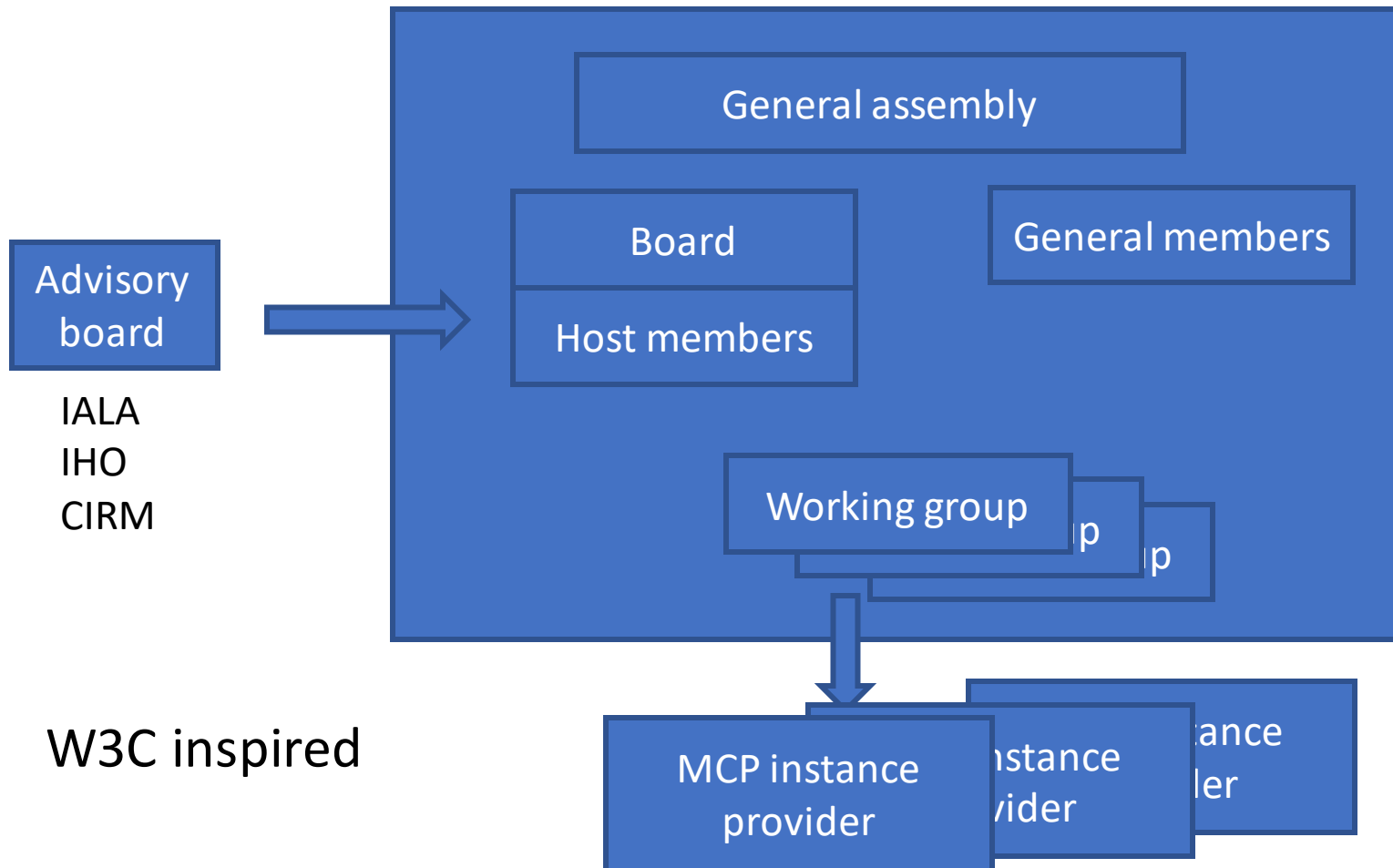


Multiple MCP instance providers





Maritime Connectivity platform Consortium; MCC





e-Navigation
Underway2020
A s i a - P a c i f i c

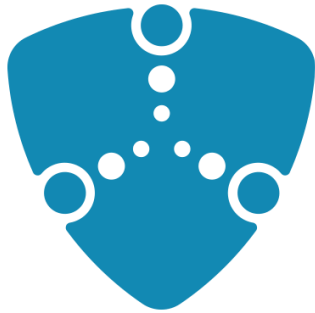


SMART-NAVIGATION

WIDER CONNECTION SAFER NAVIGATION



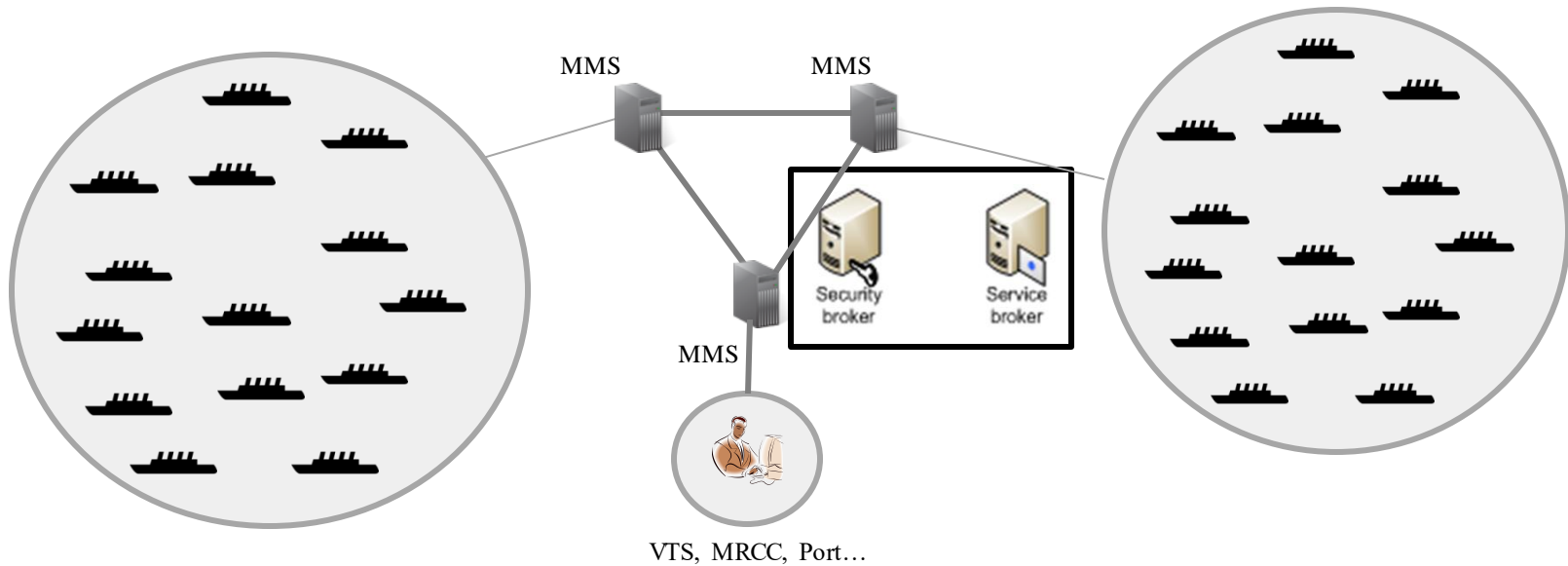
e-Navigation
Underway2020
A s i a - P a c i f i c



NAVELINK



The Maritime Cloud



The MCP in 2013!



e-Navigation Underway2020

A s i a - P a c i f i c



2008

2012

2015

2019

2020



WIDER CONNECTION SAFER NAVIGATION



e-Navigation Underway2020

A s i a - P a c i f i c



2008

2012
Birth of MCP
(Maritime Cloud)

2015
MCP testbed established

2015
Establishment of the
Maritime Cloud
Development Forum

2019
Founding of the
MCP consortium

2020
First operational
instances



Arctic@Web



PITALS



eMIR eMaritime Integrated Reference Platform



WIDER CONNECTION SAFER NAVIGATION



e-Navigation Underway2020

A s i a - P a c i f i c



2008

2012
Birth of MCP
(Maritime Cloud)

2015
Establishment of the
Maritime Cloud
Development Forum

2019
Founding of the
MCP consortium

2020
First operational
instances



NAVELINK

SMART

WIDER CONNECTION SAFER NAVIGATION



e-Navigation
Underway2020
A s i a - P a c i f i c



NAVELINK

SMART-NAVIGATION
WIDER CONNECTION SAFER NAVIGATION



Authentication of entities between instances possible!

Where are we, and what's next

We nearly have a decentralised identity solution
Still need to specifying some aspects of being a MIR provider

MSR functionality is mature in a centralised scenario,
but we haven't figured out exactly how a decentralised MSR should work

The MMS is "born" decentralised, but still only used in the SMART instance



e-Navigation
Underway2020
A s i a - P a c i f i c



**More info, membership application
form and access to the testbed at**

www.maritimeconnectivity.net



e-Navigation
Underway2020
A s i a - P a c i f i c



Q&A